



quality natural raw
materials

CANNABIS ESSENTIAL OIL

~Terpenes~



*Manufacturer's certification

www.cannabication.eu

Natural essential oil with intense terpenic aroma distilled from industrial hemp flowers.

Specifications:

Appearance: Liquid

Color: Yellow (different shades)

Odor: Terpenic

Solubility: Alcohol- and oils- soluble

Method of extraction:

Steam distillation.

Sold in*:

- 0.5 kg containers
- 1 kg containers

** Subject to availability. Other packaging possibilities may be available upon request.*

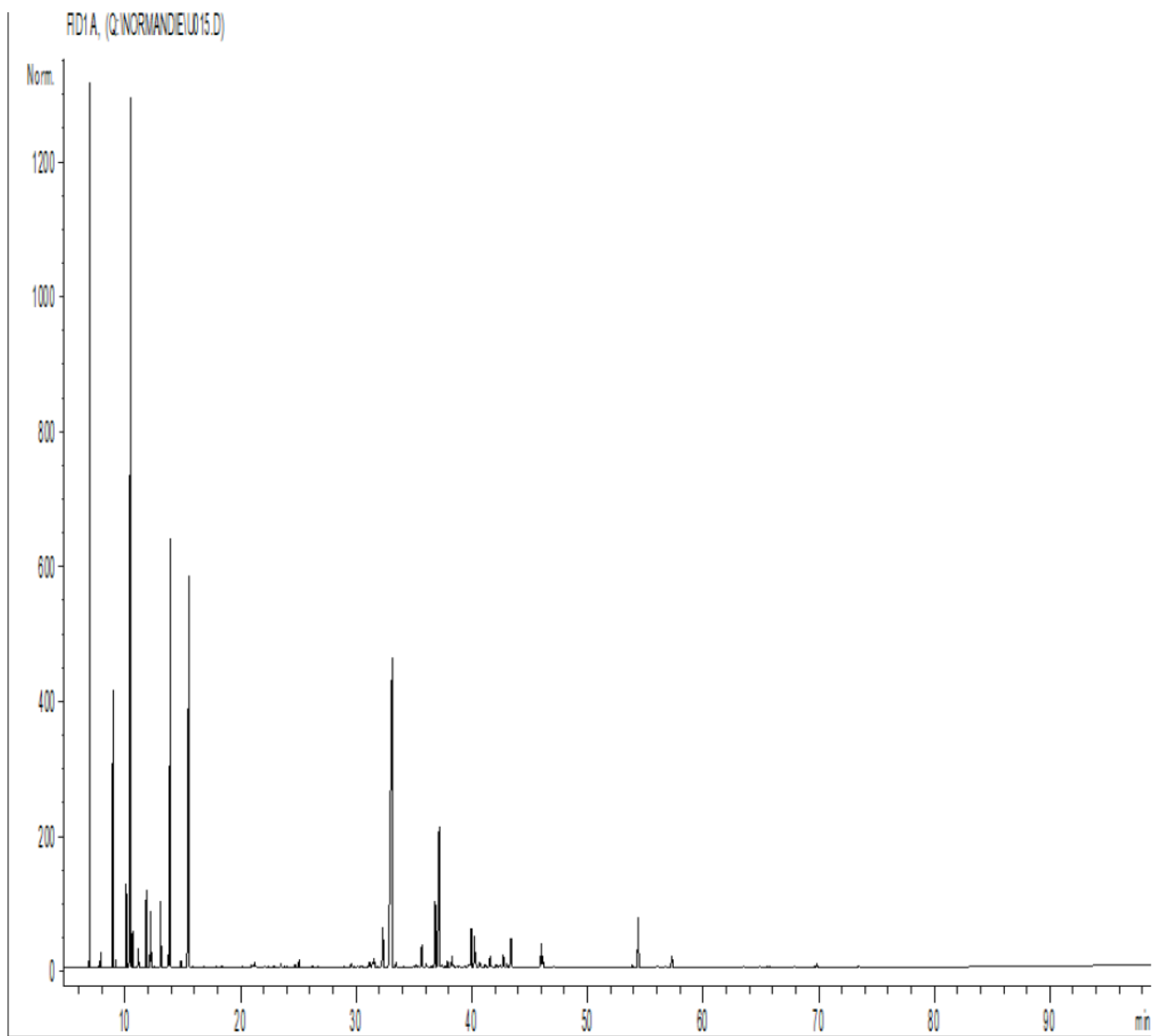


Manufacturer's key certifications:

REACH

SAMPLE RESULTS

CHROMATOGRAPHIC PROFILE



For informational and example purposes only. No rights can be derived from this document. Actual product details, test results and packaging may differ from the ones presented in this document.

TERPENES

No.	RT (min)	Component	Norm (%)	Allergens (%)
1	4.5	OCTANE	0.02	
2	4.6	ACETONE	0.03	
3	5.4	2-ETHYLFURAN	0.01	
4	6.9	alpha-PINENE	11.48	
5	7.0	alpha-THUJENE	0.07	
6	7.6	alpha-FENCHENE	0.01	
7	7.8	CAMPHENE	0.17	
8	8.1	HEXANAL	0.01	
9	8.9	beta-PINENE	3.76	
10	9.2	SABINENE	0.10	
11	10.1	delta3-CARENE	1.31	
12	10.2	ALIPHATIC ESTER	0.01	
13	10.4	beta-MYRCENE	22.36	
14	10.6	alpha-PHELLANDRENE	0.40	
15	11.0	psi-LIMONENE	0.02	
16	11.1	alpha-TERPINENE	0.25	
17	11.2	HEPTANAL	0.06	
18	11.8	LIMONENE	1.11	1.11
19	12.1	1.8-CINEOLE	0.18	
20	12.2	beta-PHELLANDRENE	0.81	
21	12.5	2-HEXENAL	0.01	
22	12.9	2-PENTYLFURAN	0.01	
23	13.1	cis-beta-OCIMENE	1.01	
24	13.7	gamma-TERPINENE	0.22	
25	13.9	Trans-beta-OCIMENE	10.49	
26	14.6	HEXYL ACETATE	0.01	
27	14.8	p-CYMENE	0.12	
28	15.5	TERPINOLENE	10.60	
29	15.8	3-HEXEN-1-OL ACETATE	0.02	
30	16.8	TRIDECANE	0.01	
31	17.9	6-METHYL-5-HEPTEN-2-ONE	0.01	
32	18.3	1-HEXANOL	0.03	
33	19.8	ALLOOCIMENE	0.02	
34	20.1	3-HEXEN-1-OL	0.03	
35	20.4	ALIPHATIC ESTER	0.01	
36	20.9	FENCHONE	0.06	
37	21.0	ALIPHATIC ESTER	0.02	
38	21.1	MENTHATRIENE ISOMER	0.04	
39	21.2	NONANAL	0.10	
40	21.3	2-HEXEN-1-OL	0.03	

For informational and example purposes only. No rights can be derived from this document. Actual product details, test results and packaging may differ from the ones presented in this document.

41	21.8	AROMATIC COMPOUND	0.02	
42	22.0	ALIPHATIC ESTER	0.02	
43	22.4	HEXYL BUTYRATE	0.04	
44	22.9	DIMETHYLSTYRENE ISOMER	0.04	
45	23.4	alpha.p-DIMETHYLSTYRENE	0.07	
46	23.8	1-OCTEN-3-OL	0.03	
47	23.9	MENTHATRIENE ISOMER	0.03	
48	24.7	Trans-THUJANOL	0.07	
49	25.0	4.8-TERPINOLENE EPOXIDE	0.16	
50	26.1	YLANGENE	0.04	
51	26.4	ALIPHATIC ESTER	0.01	
52	26.7	alpha-COPAENE	0.02	
53	27.1	ALIPHATIC ESTER	0.01	
54	28.9	alpha-GURJUNENE	0.04	
55	29.2	SESQUITERPENE	0.03	
56	29.5	BERGAMOTENE ISOMER	0.02	
57	29.8	LINALOL	0.12	0.12
58	30.1	SESQUITERPENE	0.03	
59	30.3	PINOCARVONE	0.03	
60	30.4	SESQUITERPENE	0.04	
61	31.0	SESQUITERPENE	0.03	
62	31.1	alpha-cis-BERGAMOTENE	0.16	
63	31.4	alpha-SANTALENE	0.16	
64	31.5	SESQUITERPENE	0.28	
65	31.8	SESQUITERPENE	0.02	
66	32.0	SESQUITERPENE	0.02	
67	32.3	alpha-trans-BERGAMOTENE	1.06	
68	32.6	beta-CUBEBENE	0.04	
69	33.0	beta-CARYOPHYLLENE	16.10	
70	33.4	6.9-GUAIADIENE + AROMADENDRENE	0.04	
71	33.5	HEXYL CAPROATE	0.13	
72	33.8	SESQUITERPENE	0.02	
73	34.0	TERPENIC ACETATE	0.03	
74	34.1	GURJUNENE ISOMER	0.02	
75	34.3	SESQUITERPENE	0.02	
76	34.5	SESQUITERPENE	0.02	
77	34.9	HUMULENE ISOMER	0.05	
78	35.1	SESQUITERPENE	0.03	
79	35.2	BERGAMOTENE ISOMER	0.07	
80	35.3	ARISTOLENE ISOMER	0.04	
81	35.5	SESQUITERPENE	0.02	
82	35.6	ALLOAROMADENDRENE	0.58	
83	36.0	SESQUITERPENE	0.10	
84	36.1	ESTRAGOLE	0.04	
85	36.5	FARNESENE ISOMER	0.05	
86	36.8	alpha-HUMULENE	4.61	
87	37.1	E-beta-FARNESENE	1.62	
88	37.3	SESQUITERPENE	0.04	

For informational and example purposes only. No rights can be derived from this document. Actual product details, test results and packaging may differ from the ones presented in this document.

89	37.4	NERAL	0.07	0.07
90	37.7	Z-beta-FARNESENE	0.05	
91	37.9	gamma-SELINENE	0.17	
92	38.1	SESQUITERPENE	0.05	
93	38.3	4.5-di-epi-ARISTOLOCHENE	0.30	
94	38.4	gamma-CURCUMENE	0.06	
95	38.8	alpha-TERPINEOL	0.03	
96	38.9	ARISTOLENE ISOMER	0.02	
97	39.7	ARISTOLOCHENE ISOMER	0.06	
98	39.8	SELINENE ISOMERE	0.05	
99	39.9	beta-SELINENE	1.04	
100	40.2	alpha-SELINENE	0.78	
101	40.4	beta-BISABOLENE	0.16	
102	40.6	BICYCLOGERMACRENE	0.10	
103	40.7	CURCUMENE ISOMER	0.08	
104	41.1	SESQUITERPENE	0.09	
105	41.2	SESQUITERPENE	0.05	
106	41.5	alpha-FARNESENE	0.29	
107	41.7	delta-CADINENE	0.05	
108	42.1	gamma-CADINENE	0.08	
109	42.2	alpha-PANASINSEN	0.04	
110	42.3	SESQUITERPENE	0.04	
111	42.4	SESQUITERPENE	0.05	
112	42.6	delta-SELINENE	0.15	
113	42.7	beta-SESQUIPHELLANDRENE	0.08	
114	43.0	SESQUITERPENE	0.30	
115	43.3	SELINA-3.7-DIENE	0.97	
116	43.9	MYRTENOL	0.01	
117	44.0	CAMPHOLENOL	0.01	
118	44.5	ALIPHATIC ESTER	0.02	
119	44.7	SESQUITERPENE	0.01	
120	45.5	SESQUITERPENE	0.01	
121	46.0	GERMACRENE B	0.27	
122	46.1	Trans-ANETHOLE	0.65	
123	47.0	p-CYMENE-8-OL	0.03	
124	47.4	GERANIOL	0.01	0.01
125	48.3	E-GERANYL ACETONE	0.01	
126	50.6	TERPENIC ESTER	0.01	
127	51.1	alpha-CALACORENE	0.02	
128	51.9	ALIPHATIC ESTER	0.01	
129	53.4	ALIPHATIC ALCOHOL	0.02	
130	53.8	ISOCARYOPHYLLENE OXIDE	0.07	
131	54.4	CARYOPHYLLENE OXIDE	1.34	
132	54.8	AROMATIC COMPOUND	0.03	
133	55.1	SESQUITERPENIC EPOXIDE	0.01	
134	55.2	AROMATIC COMPOUND	0.01	
135	55.5	SESQUITERPENIC EPOXIDE	0.01	
136	55.9	ALIPHATIC ESTER	0.04	

For informational and example purposes only. No rights can be derived from this document. Actual product details, test results and packaging may differ from the ones presented in this document.

137	56.0	SESQUITERPENOL	0.05	
138	56.7	SESQUITERPENOL	0.03	
139	57.2	NEROLIDOL	0.07	
140	57.3	6.7-HUMULENE EPOXIDE	0.28	
141	60.6	SESQUITERPENOL	0.02	
142	61.9	SESQUITERPENOL	0.02	
143	63.4	EUDESEM-7-EN-4-OL	0.03	
144	64.1	SESQUITERPENOL	0.02	
145	64.8	SESQUITERPENOL	0.02	
146	65.5	SESQUITERPENOL	0.03	
147	65.7	GERANYLGERANIADIENE Mw= 272	0.02	
148	67.7	SESQUITERPENE Mw= 202	0.02	
149	67.9	EUDESMA-3.-5-11-TRIENE	0.04	
150	69.2	SESQUITERPENIC EPOXIDE	0.02	
151	69.4	SESQUITERPENOL	0.01	
152	69.5	CARYOPHYLLA-3.7-DIEN-6-OL ISOMER	0.03	
153	69.8	CARYOPHYLLA-3,7-DIEN-6-OL	0.09	
154	71.6	SESQUITERPENIC EPOXIDE	0.02	
155	73.4	SESQUITERPENIC EPOXIDE	0.06	
156	83.5	PHYTOL	0.01	
		TOTAL	99.99	1.31

RT – retention time

Norm (%) – normalized to a 100% share of the analytical signal area of a given component with respect to the sum of the areas of all analytical signals.